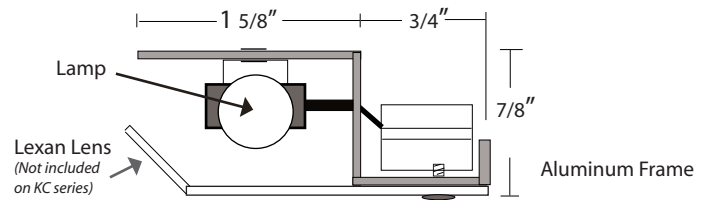




LX SERIES

Low Voltage Xenon Undercabinet Lighting



LX Series Part Number

Part #	Length	# of Lamps	Watts
5LX12	5"	2	12
7LX24	7"	4	24
9LX24	9"	4	24
15LX36	15"	6	36
21LX48	21"	8	48
24LX60	24"	10	60
30LX72	30"	12	72
36LX84	36"	14	84

Features

- 2500K color temperature
- Average lamp life 11,600 hours
- Xenon lamps included
- Full length clear lexan lens standard, frosted lens may be ordered. Add suffix "FR"
- 26.65 Lumens per lamp
- Replacement Lamp: #12V5W-X2

KCL & KC SERIES

Low Voltage Standard Incandescent Undercabinet Lighting

KCL Series Part Number

Full length clear lexan lens standard, frosted lens may be ordered. Add suffix "FR"

Part #	Length	# of Lamps	Watts
5KCL10	5"	2	12
7KCL20	7"	4	24
9KCL20	9"	4	24
15KCL20	15"	6	36
21KCL40	21"	8	48
24KCL50	24"	10	60
30KCL60	30"	12	72
36KCL70	36"	14	84

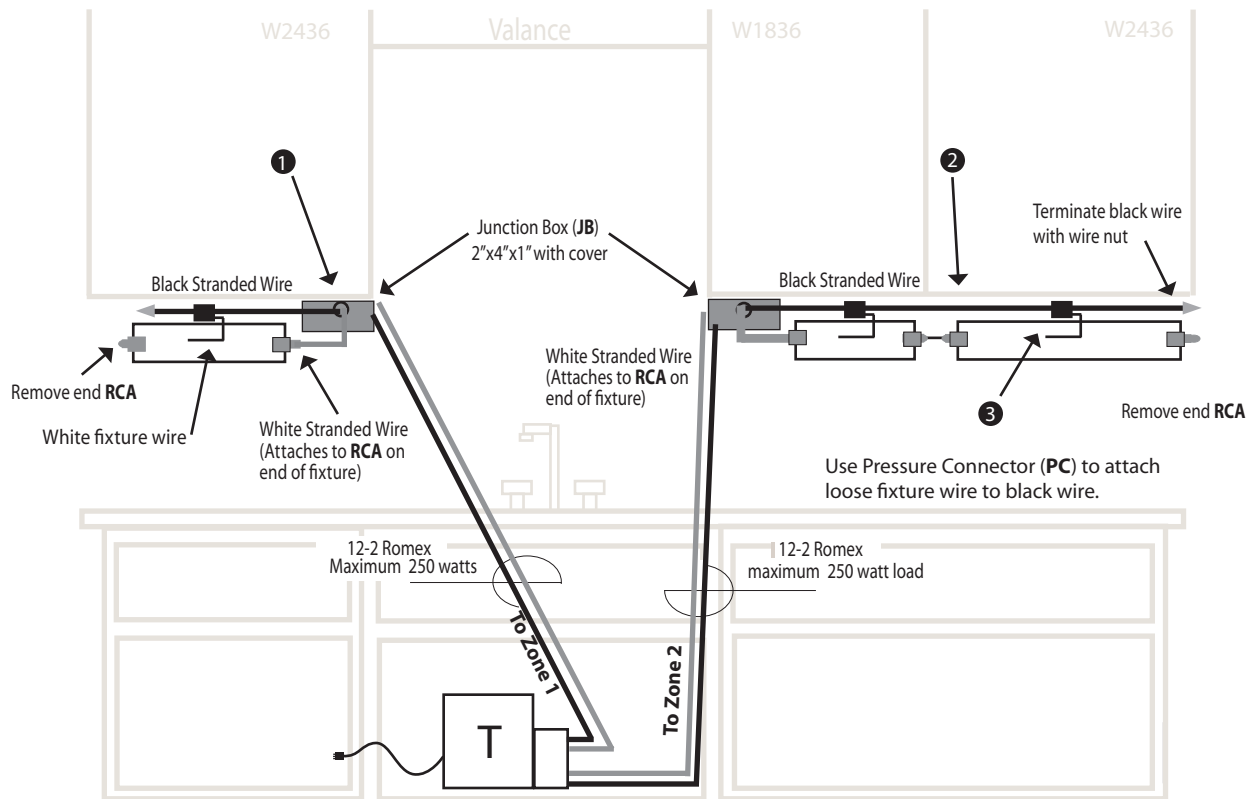
KC Series Part Number

No lens included

Part #	Length	# of Lamps	Watts
5KC10	5"	2	12
7KC20	7"	4	24
9KC20	9"	4	24
15KC20	15"	6	36
21KC40	21"	8	48
24KC50	24"	10	60
30KC60	30"	12	72
36KC70	36"	14	84

Features

- 2200K color temperature
- Average lamp life 9,000 hours
- Lamps included
- 19.61 Lumens per lamp
- Replacement Lamp: #168



Pre-Wiring

Run separate 12-2 Romex from transformer location to each undercabinet zone. Wire length from transformer to first light in zone is not to exceed 20 feet, when using magnetic transformers. If zone exceeds 250 watts, run additional 12-2 Romex to split zone. Wiring may start at either of zone.

Transformer Location

- A common location for the transformer is in a sink base cabinet.
- Plug transformer into switched outlet.
- Transformer must be accessible and have air circulation.
- DO NOT LOCATE IN ATTIC!

Installing Fixtures

1. At back of cabinet where 12-2 Romex is stubbed out, transition to two 12 gauge stranded THHN wires. Ground wire is not used. Make connections inside Junction Box (JB).
2. Attach white wire to Ring Connector Assembly (RCA) on end of first frame (crimp connection must be tight). Continue RCA to RCA connections between fixtures with additional THHN wire. Remove RCA from end of last fixture and discard.
3. Remove yellow Pressure Connector (PC) from parts bag. Insert black wire from transformer into "feed through" chamber of PC. Insert loose wire from back of fixture into "dead end" chamber of PC. Using pliers, pinch metal blade through both wires. Snap cover shut. Repeat for each fixture in zone. Terminate black wire with wire nut at last fixture in zone.